



ENCLOSING ELECTRONICS ONE BOX AT A TIME

ENCLOSURES & ASSEMBLY SERVICES

ENCLOSURES & ASSEMBLY SERVICES

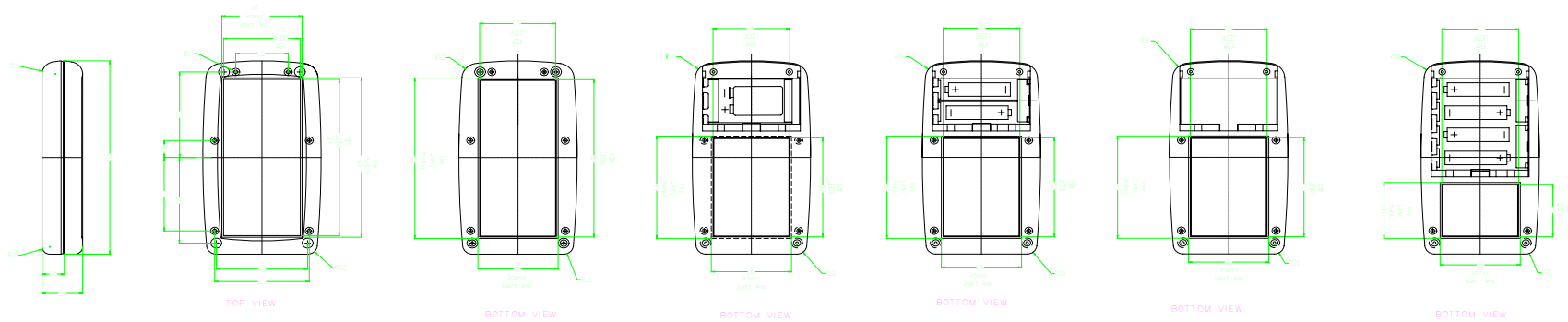
BOX ENCLOSURES, INC

28835 N. HERKY DRIVE, #114,
LAKE BLUFF, IL 60044

TEL: 847-932-4700

WWW.BOXENCLOSURES.COM

FAX: 847-932-4701



SIDE VIEW

TOP VIEW

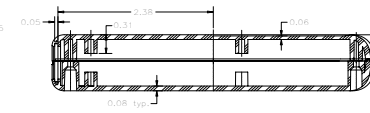
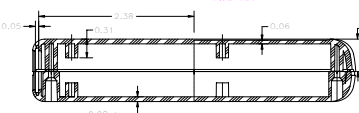
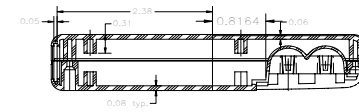
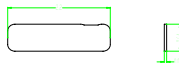
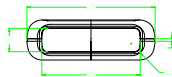
BOTTOM VIEW

BOTTOM VIEW

BOTTOM VIEW

BOTTOM VIEW

BOTTOM VIEW

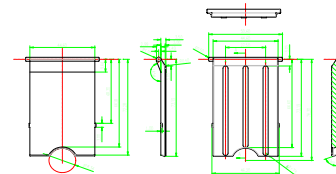
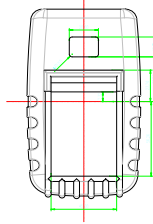
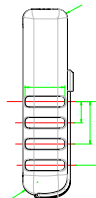
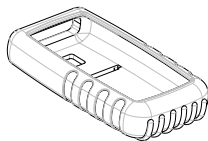
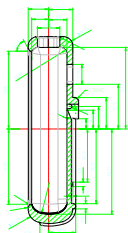
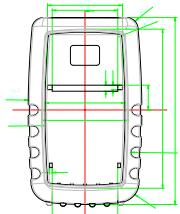
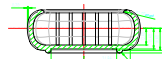
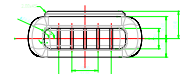


NO BATTERY COMPARTMENT

TWO AA

NO BATTERY COMPARTMENT W/ DEEP TOP

NO BATTERY COMPARTMENT W/ SHALLOW TOP



THIS DRAWING IS THE PROPERTY OF AND MAY EMBODY PROPRIETARY INFORMATION OWNED BY X-Box Enclosures. IT IS PROVIDED UNDER A CONFIDENTIAL RELATIONSHIP FOR A SPECIFIC PURPOSE. THE RECIPIENT AGREES TO USE IT ONLY FOR SUCH PURPOSE AND RETURN IT TO X-Box Enclosure UPON REQUEST.

<p>ENCLOSING ELECTRONICS ONE BOX AT A TIME</p> <p>ENCLOSURES & ASSEMBLY SERVICES</p>		Revision:	
Title: 55-SERIES		Model:	
Material:	TOLERANCE all dimension in mm unless otherwise specified	Dwg. No.:	Part No.:
Finish:	<ul style="list-style-type: none"> x ±0.20 .x ±0.10 .xx ±0.05 ANGLE ±0.5° 	Color:	Dwn. Date Tan zonghaun Apr 10 04 Chk. Date
Proj.		A4 Sheet of	App. Date